



OPENING ZOMERSEIZOEN

Nienke van 't Klooster
VAAN YACHTS / SAIL THE PLANET

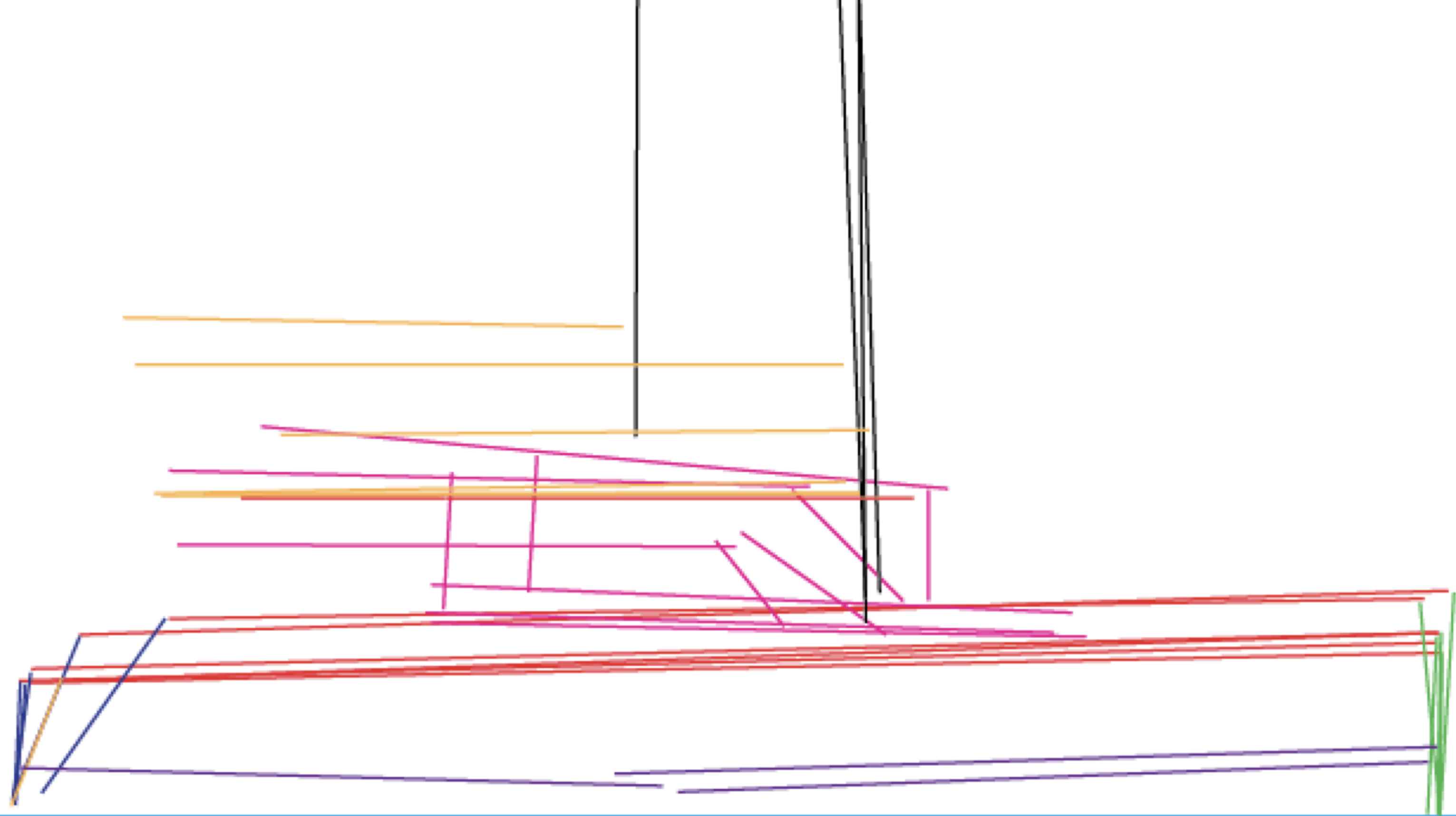
THE VAAN MISSION
SAIL THE PLANET

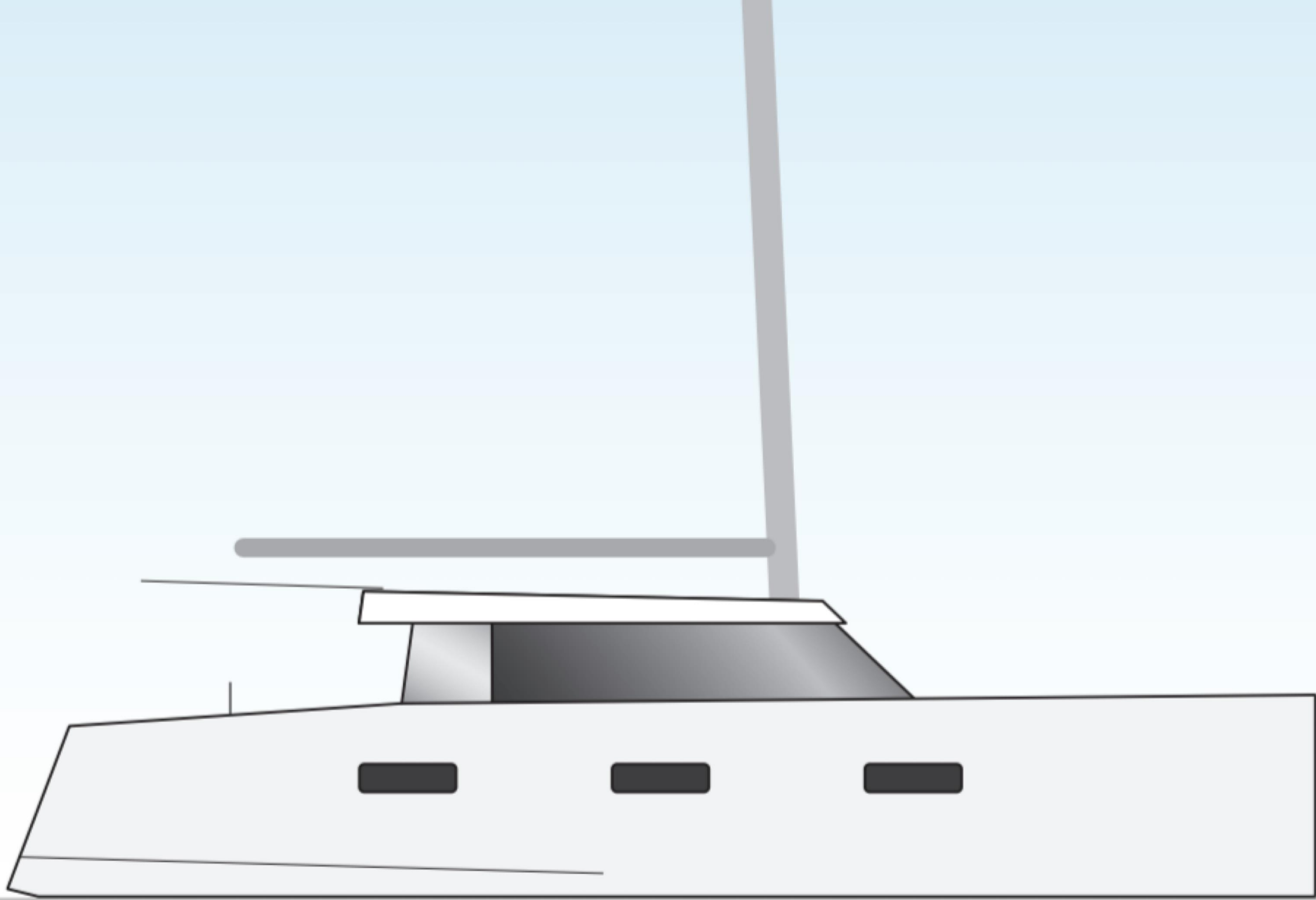




VAN



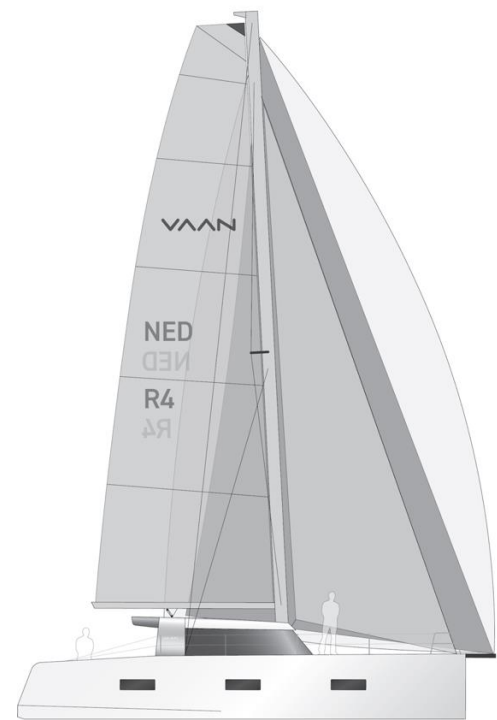






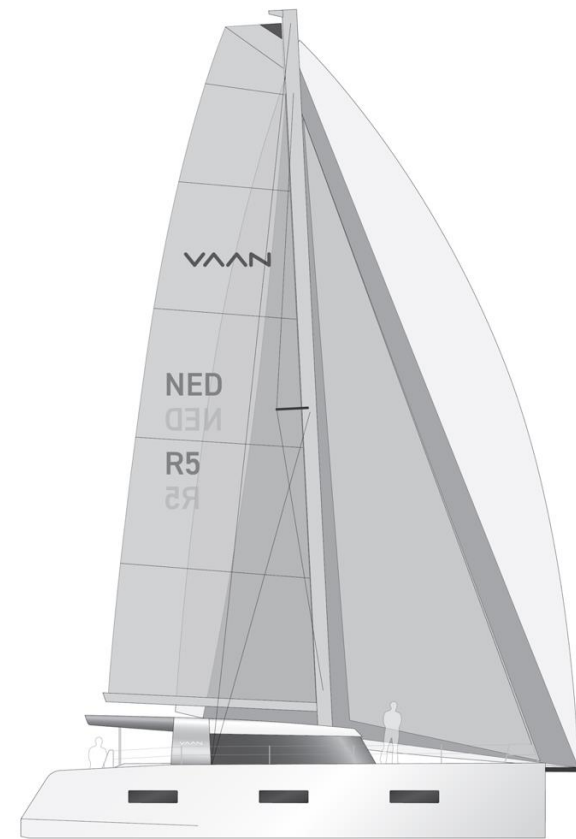


THE VAAN RANGE



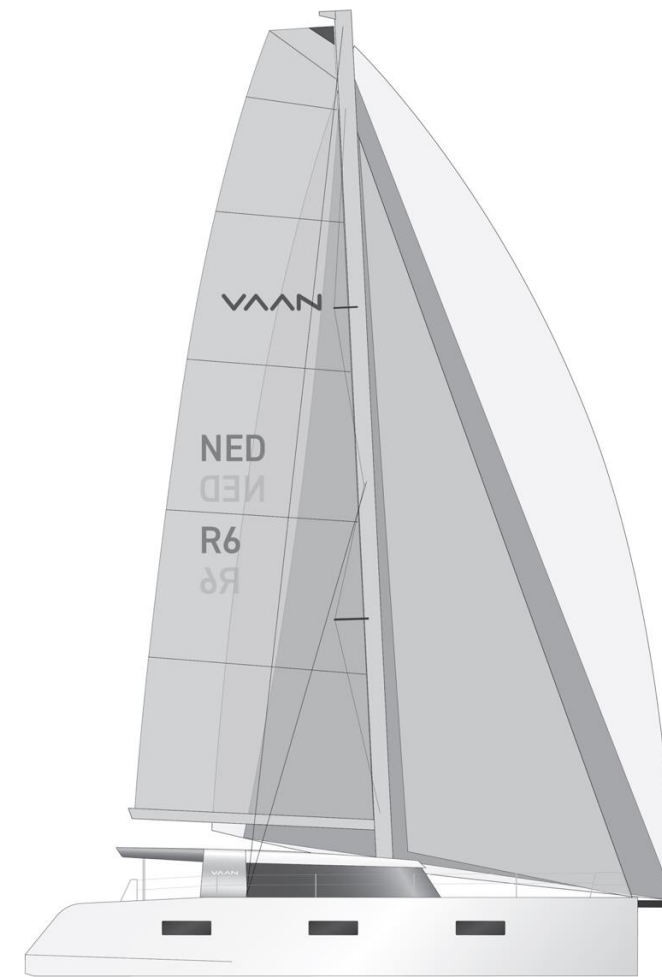
R4

L: 12.80m
B: 7,06m



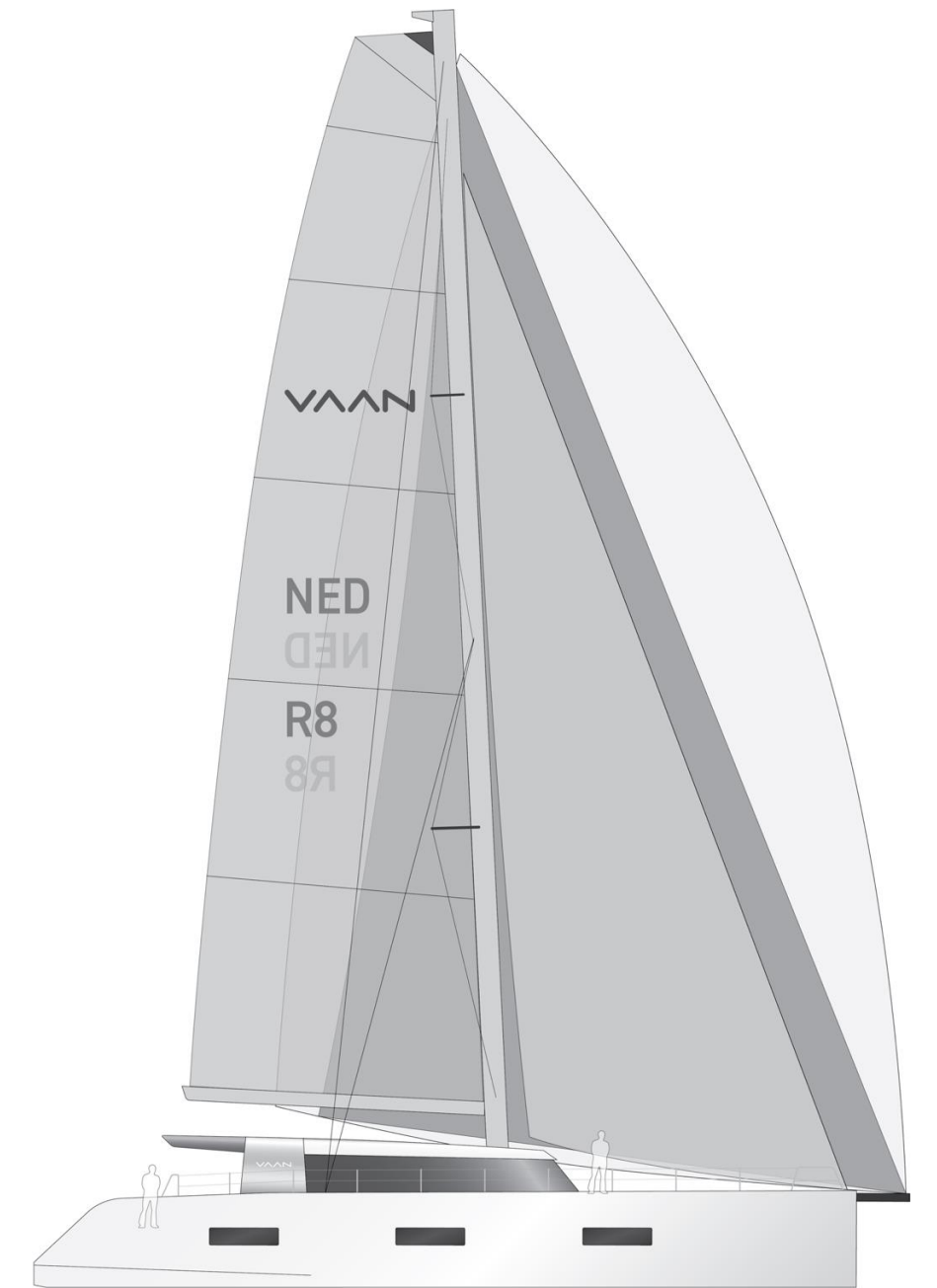
R5

L: 14.95m
B: 7.95m



R6

L: 17.70m
B: 9.03m



R8

L: 23.80m
B: 11.00m

R4





R5

VAN



R5



V&A





VAN

R6



VAN®

R6



V&A

R6



CASCO BUILDING



VT2250



SQRJAC107276150
Q180356_BN458

CASCO BUILDING



CASCO BUILDING



THE TURNING POINT



TRANSPORT TO HELLEVOETSLSUIS



VAAN BASISCAMP



OUTFITTING



DELIVERY

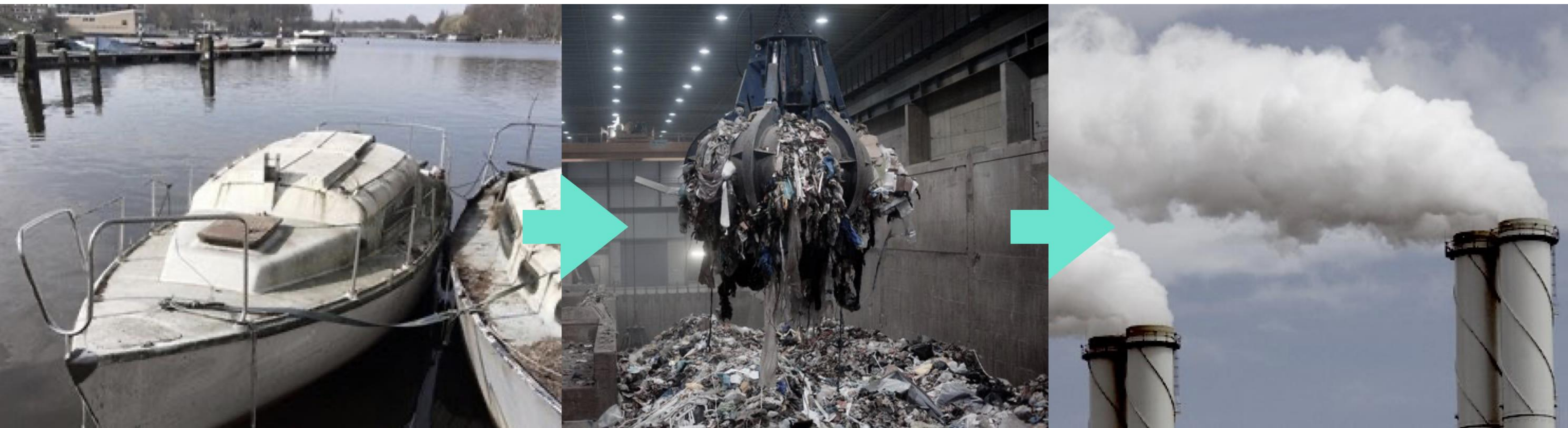


An aerial photograph of a white catamaran sailboat with a large blue sail, sailing on the ocean. The boat is moving from the bottom center towards the top right, leaving a white wake. The water is a deep blue with some white foam from the waves. The sail has the word 'VAAN' written on it in white.

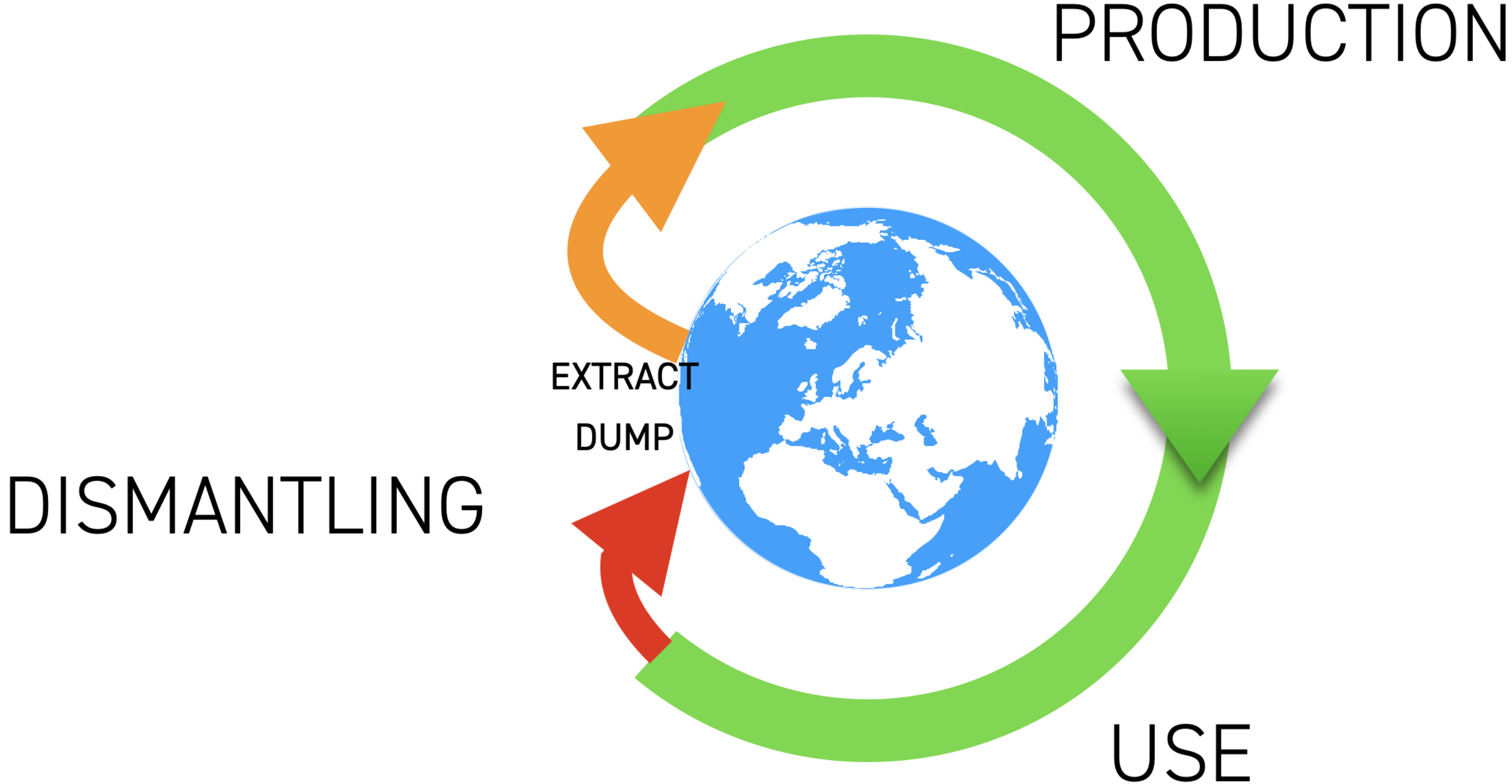
SAIL THE PLANET

VAAN®

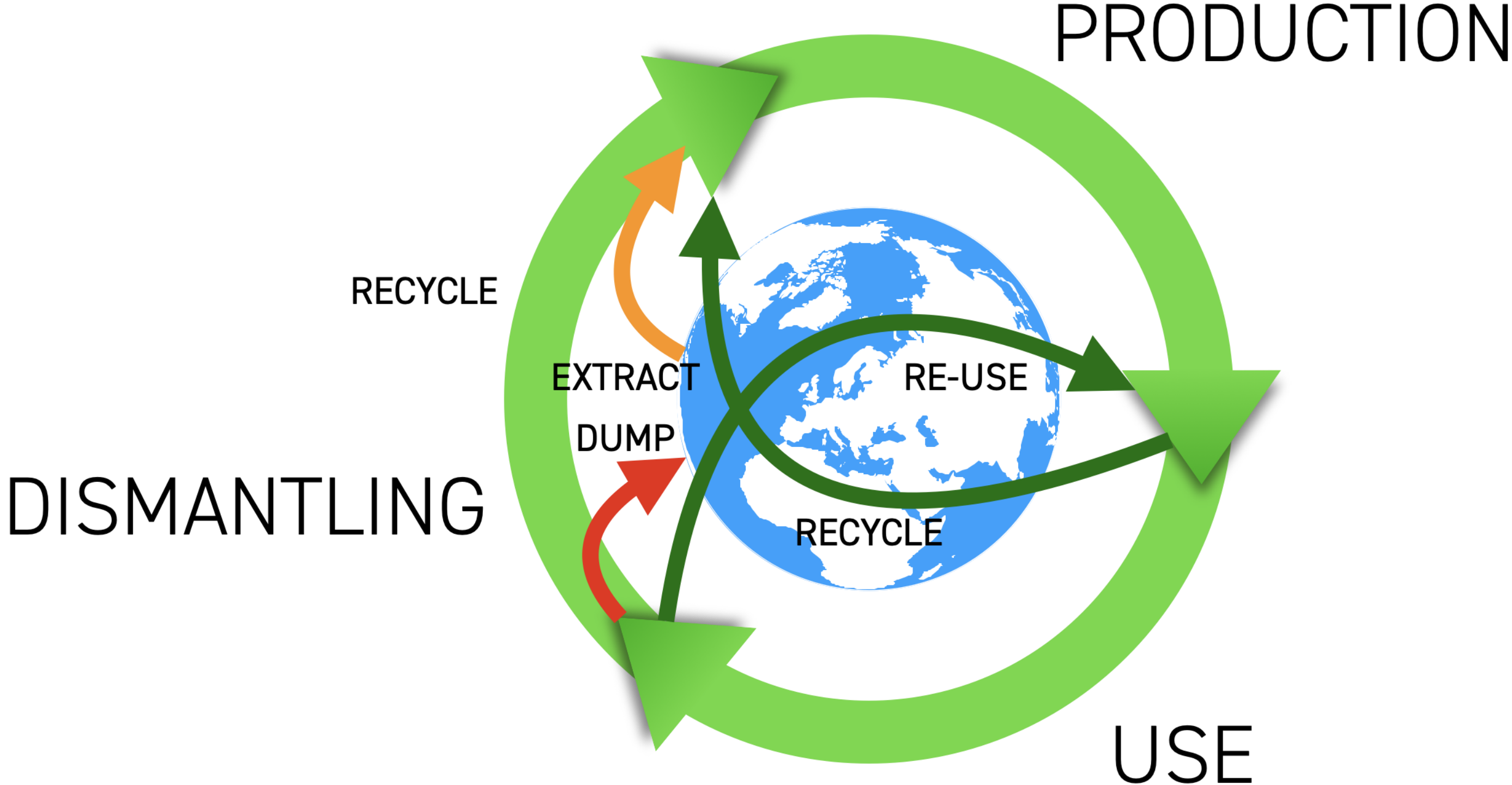
80.000 BOATS END-OF-LIFE



LINEAR LIFE-CYCLE



CIRCULAR LIFE-CYCLE



CIRCULAR MATERIALS









VAN



0:11/02:10



1x

SAIL THE PLANET .ORG

SUPPORTING INITIATIVES
AROUND THE WORLD
TO PROTECT AND RESTORE
COASTAL HABITATS

WHAT WE SUPPORT

We support initiatives that focus on:

- Education, Awareness and Behavioural Change
- Clean-ups
- Nature Preservation & Animal Protection
- Research
- Lobby and Activism

OUR FUNDING

Sail The Planet.org is funded by:

1. Vaan Sponsorship
2. Vaan Customer Donations
3. Corporate Sponsors
4. NGO Grants
5. Individual Donations, Endowments, Inheritances
6. Fundraising Events

FIRST PROJECT:

Educational package
'Max & Emma and the Coral Elves'

