



## Expat Centre Leiden makes international employment and life in Leiden and the greater region a successful experience.

By building networks and communities, we make international people feel at home and help employers with the global mobility of their staff. Providing complete support packages, we are establishing Leiden as a region for international talent. This is done in collaboration with a network of local businesses, municipalities, and organisations.

Expat Centre Leiden (ECL) is a non-profit organisation funded by the government, educational institutions and companies. Together with the Netherlands Foreign Investment Agency, the Economic Board Zuid-Holland, Innovation Quarter and a nationwide network of Expat Centres, we are here to support companies and their international employees.

We value companies attracting international talent to the Leiden Region. And we are happy that such talent remains here. That is why we help companies and HR departments hiring international staff, and why we support international employees on arrival and during their stay. We offer our services to companies and internationals in Leiden, Leiderdorp, Oegstgeest, Voorschoten and Zoeterwoude.

## Hiring international staff? Let us help!

### How can Expat Centre Leiden support your company and HR department?

- Services for companies and HR departments based in, or moving to, the region.
- Information about procedures for hiring foreign nationals (legal aspects, registration forms, social security, taxes). All free of charge!
- Introduction to relevant government agencies and our specialised service partners.
- Website, Corporate Newsletters and Expat Newsletters with helpful resources, the latest news, and trends regarding international employment.
- In-house presentations (by request) for your international staff and their partners about daily life, procedures, and ways to meet other internationals.
- Invitations to informative events hosted by our trusted partners.
- Referrals to our trusted partners, who serve the international community.



## How can Expat Centre Leiden support your international employees and their families?

### Arrival in the Netherlands:

- We can assist your international staff with registering at the Municipal Personal Records Database (BRP) to receive a citizen service number (BSN). Internationals (or an HR representative) can schedule a registration appointment through our website. A small fee is charged for this service.
- The appointment includes a 30-minute consultation with our helpdesk, where experienced international ACCESS volunteers will provide all the practical information your employees need to start their stay. Alongside a Welcome Pack, they will get advice on topics such as banking, insurances, and finding a GP.

### Support during their stay

- Together with our trusted partners, we organise informative and social events, and build a community, allowing your international employees to create a new home-away-from-home.
- We provide free information about (municipal) services, housing, education, tax, law, the 30% ruling and more.
- Our helpdesk is available to answer specific questions free of charge.
- Through our website, social media, and Expat Newsletters, we offer suggestions on what to see and do in the Leiden region.

## Contact

Expat Centre Leiden  
Stadskantoor Leiden,  
LEVEL building, ground floor, booth 0.22.  
Bargelaan 190, 2333 CW, Leiden



+31 71 5166005

info@expatcentreleiden.nl  
www.expatcentreleiden.nl

## Opening hours

**Mondays** 9.00 - 17.00 h

**Wednesdays** 9.00 - 17.00 h

For registrations, you need to make an appointment online. For general questions, no appointment is needed.

## Backoffice

Stationsweg 26, 2312 AV Leiden  
Postbus 190, 2300 AD Leiden  
T +31 71 5166005

## Find us on the web

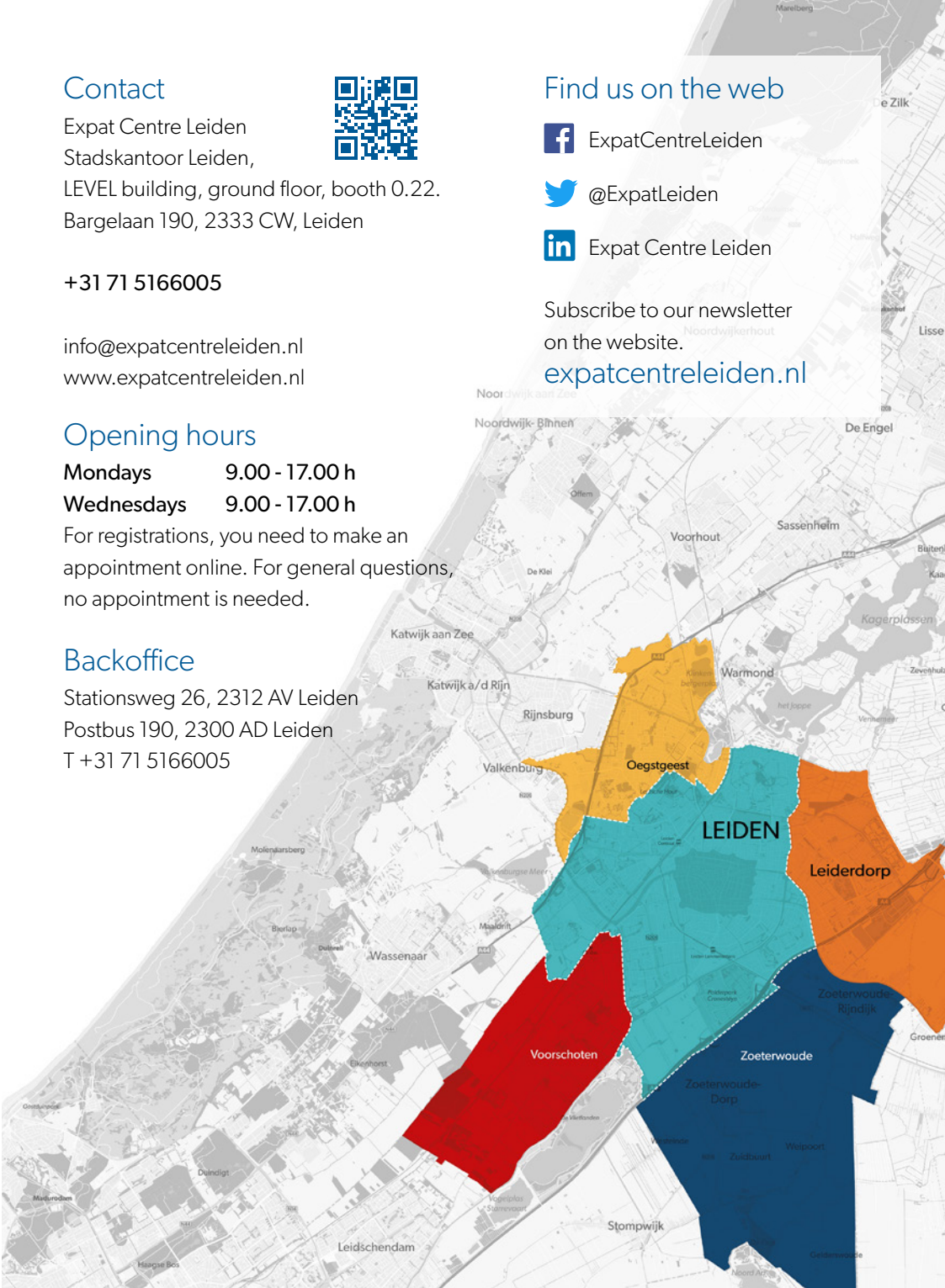
 ExpatCentreLeiden

 @ExpatLeiden

 Expat Centre Leiden

Subscribe to our newsletter  
on the website.

[expatcentreleiden.nl](http://expatcentreleiden.nl)



**ACCESS**  
SERVING THE INTERNATIONAL COMMUNITY



tax advisors  
accountants  
expat consultants | **hbk**

**LEBARA**



**Rwv** ADVOCATEN

*Rabobank*



**Tweelwonen.nl**  
long stay • short stay • hotels



**Atlas**  
International Movers



**BLAAUWBERG**  
strategieontwikkeling & kennistransfer



**Webster**  
LEIDEN CAMPUS

Webster University-USA



**DECLERCQ**  
Advocaten • Notariaat



**DutchNews.nl**

**DUTCHREVIEW**  
WWW.DUTCHREVIEW.COM



**TAXI? ELTAX**

**EXPAT MORTGAGES**  
makes you feel at home



*Hello Expat!*



**HYPOTHEEK VISIE**



**LIMES**  
international

van den Heuvel Juristen  
arbeidsrecht, migratierecht & mediation

**nanny nina**



**PAS BMS Relocation services**

**PILGRIM'S HOUSE**  
STUDENT HOMES



**The TaxSavers**

**Your Financials**